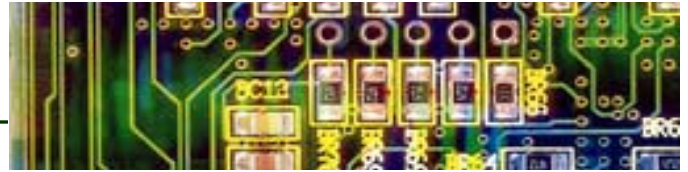


# Myron L D-1 & D-2



## Dialysate Conductivity Meters

### Overview

The choice of hemodialysis professionals for years, these compact instruments have been designed specifically to test dialysate solutions. By measuring electrical conductivity, they will quickly determine if dialysate concentrations are correct.

To use these hand-held instruments, the operator simply fills the cell cup with dialysate solution and pushes a button. The needle indicates the total concentrations of salts in the solution.

### Model D-1

Has an expanded scale of 11-15 millimhos and is useful for testing final dialysate. A unique feature of this model is the adjustable green color band above the dial. This provides an immediate visual confirmation of whether or not the dialysate concentration is within the patient's "safe zone".

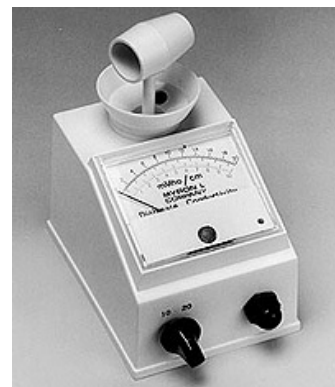
### Model D-2

Features dual scales on the dial and can test both acetate and bicarbonate dialysate. Both instruments are easy to calibrate for more accurate readings.

Both instruments have built-in cell cups and are completely self-contained. They are powered by 9 volt batteries which last for at least 2,000 tests. A glow light serves as a battery reserve indicator.



**Model D-1 Single Range**



**Model D-2 Dual Range**

### **Single & Dual Range Highlights**

- Fast and accurate dialysate tests
- Models for both acetate and bicarbonate solutions
- Chip/crack resistant polyethylene cell cup
- Rugged design
- Simple to use
- Automatic temperature compensation

BC Group International, Inc.  
3081 Elm Point Industrial Dr  
St. Charles, MO 63301 USA  
314-638-3800  
314-638-3200 Fax  
1-888-223-6763

**BC Group**   
*Integrity is Our Competitive Advantage*  
[www.bcgrouptl.com](http://www.bcgrouptl.com)

# Specifications

<b>Ranges</b>	<b>Model D-1</b>	11-15 millimhos
	<b>Model D-2</b>	0-10 millimhos 0-20 millimhos
<b>Accuracy</b>	± 2% of full scale ± 1% at 14.0 millimhos calibration point	
<b>Repeatability</b>	±1%	
<b>Temperature Compensation</b>	Automatic (to 25°C / 77°F) between 50° and 160°F (10-71°C)	
<b>Electrodes</b>	Built-in, never need replatinizing	
<b>Calibration</b>	Easy & fast with 14.0 millimhos Standard Solution and finger adjustable internal trimmer (also 12.5 and 13.4 millimhos solution available)	
<b>Circuitry</b>	Solid-state, sealed against moisture	
<b>Power</b>	Two 9 volt batteries supplied	
<b>Battery Life</b>	Approximately one year or 2,000 tests	
<b>Case</b>	Heavy gauge, textured ABS	
<b>Cell Cup</b>	Chip and crack resistant polyethylene	
<b>Dimensions</b>	3.4" W x 4.5" D x 4.0" H (85 x 129 x 126 mm)	
<b>Weight</b>	One pound (450 gms)	