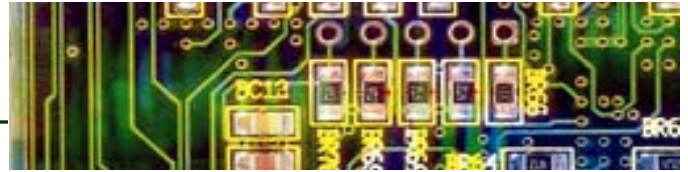


# PMT-100

## *External Pacer Tester*



### Overview

#### Test invasive and non-invasive Pacemakers

The PMT 100 is an advanced, low cost, external pacemaker tester designed for accurately testing all types of external pacemakers including invasive and trans thoracic. The ease of operation and the print capability saves time and cost associated with the testing of Pacemakers.



### FEATURES

- Latest Microprocessor Technology
- Smallest and Light weight
- Accuracy Tests:
  - Amplitude Rate
  - Pulse width
- Demand Sensitivity Tests:
  - Amplitude Pulse
  - Width
  - Rate, Sqr, Tri, SSQ
- Sensed Refractory Period
- Paced Refractory Period
- 60/50 Hz Immunity Test
- Pulse Energy
- A-V Interval
- RS232 Option
- Printer Option
- Tests all Medtronic external pacemakers

### ***PMT-100 Highlights***

- Tests invasive & non-invasive pacers
- Amplitude, Rate, & Pulse Width tests
- Demand Sensitivity tests
- Sensed Refractory Period test
- Paced Refractory Period test
- Soft Carrying Case Included

BC Group International, Inc.  
9415 Gentry Avenue  
St. Louis, MO 63125 USA  
314-638-3800  
314-638-3200 Fax  
1-888-223-6763



[www.bcgrouptl.com](http://www.bcgrouptl.com)

# Specifications

## Input Signals & Test Loads

|                              |              |
|------------------------------|--------------|
| <b>Atrial Pacing:</b>        | 500 Ohm Load |
| <b>Ventricular Pacing:</b>   | 500 Ohm Load |
| <b>Transthoracic Pacing:</b> | 50 Ohm Load  |

## Pulse Measurements

|   |                |
|---|----------------|
| <b>Current:</b>                                   |                |
| Invasive:   | 0.1 - 25 mA    |
| Non-Invasive:                                     | 1 - 200 mA     |
| <b>Rate:</b>                                      | 30 - 800 ppm   |
| <b>Pulse width:</b>                               | 0.5 to 80 mSec |
| <b>Refractory Period Tests Sensed,<br/>Paced:</b> | 20 - 500 mSec  |

## Demand Sensitivity Tests

|                      |  |
|----------------------|--|
| <b>Waveforms:</b>    | SQR, TRI, SSQ                                |
| <b>Amplitude:</b>    | 0 - 100mV / 0 - 10mV                         |
| <b>Width:</b>        | 10, 25, 40, 100 & 200 mSec                   |
| <b>Rate:</b>         | 30 - 150 bpm                                 |
| <b>Pulse Energy:</b> | 0 - 300 MJ                                   |
| <b>A-V Interval:</b> | 0 - 999 MSEC                                 |
| <b>Housing:</b>      | High Impact ABS plastic                      |
| <b>Power:</b>        | 9V alkaline battery or AC adapter (Optional) |