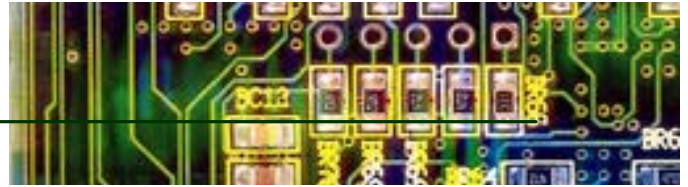


BC Biomedical ESU 2000A



Electro Surgery Unit Analyzer

Overview

Affordable ESU Testing!

Applications

Our ESU-2000A ESU Tester is full-featured & versatile! Test modes include out-put power and RF leakage, measured with a large analog meter with a different color code for each range at the input connector and on the meter making measurements quick & easy. For Return Contact Monitor (CQM, REM, ARM, PSS) testing, we've built in a 0 to 1000 ohm variable resistance with 1 ohm digital resolution; a breakthrough! Even much more expensive ESU testers generally don't offer this much range or resolution!

A Unique Approach:

Our ESM-1 Switching Module!
To keep the price down and to improve reliability, ESU2000A has no front-panel switches. Instead, the user simply changes the position of our unique ESM-1 Switching Module to select either RF Power or RF Leakage mode! For safety, the module also blocks access to unused input connectors, virtually eliminating worry about improper connections and resultant equipment damage! You won't lose the switching module because it is conveniently stored on the front panel at all times. Future switching module versions are planned to extend the range and usefulness of ESU2000A.

Accessories Included:

- . ESM-1 Switching Module
- . Red, black, & green patch cords
- . Insulated alligator clips & ground adapter
- . Spare fuses
- . Operator manual

Optional Accessories:

- . Soft-side carrying case



Highlights

- 6 Selectable loads from 50 to 500 ohms
- Return Contact Monitor test with 1 ohm steps
- Power, Current, & RF Leakage Measurement
- No batteries or power cords
- Easy-to-read color-coded meter



www.bcgrouptl.com

BC Group International, Inc.
3081 Elm Point Industrial Dr
St. Charles, MO 63301 USA
314-638-3800
314-638-3200 Fax
1-888-223-6763

Specifications

BC Biomedical ESU2000A

Display:

- . 4-1/2. analog meter; accuracy is +/- 2.0% of full scale
- . Color-coded scales in Watts & MilliAmps

Selectable Loads & Ranges:

- . 50, 100, 200, 300, 400, & 500 ohms (non-inductive)
- . The load value in ohms is also the full-scale range in watts
(Example: 50 ohm load = 50 watts full scale, etc.)

ESU output current range:

- . 0-1000 MA for all loads

RF Leakage Test:

- . 500mA maximum into 200 ohm Load

Return Contact Monitor Test:

- . 0-1000 ohms; 1 ohm resolution; digital display; 3% accuracy

Oscilloscope output:

- . Isolated (uncalibrated) BNC Connector

Power Requirements:

- . None; passive operation; no batteries or power cord

Case, Size & Weight:

- . High impact plastic enclosure
- . 3.1"H x 8.4"W x 9.1"D (7.9 x 21.3 x 23.1 cm); 5 lbs

RF Leakage Mode ESU Power Mode

Optional Loads:

Precision Load Registers

Specifications subject to change without notice.

BC Group International, Inc.
3081 Elm Point Industrial Dr
St. Charles, MO 63301 USA
314-638-3800
314-638-3200 Fax
1-888-223-6763

